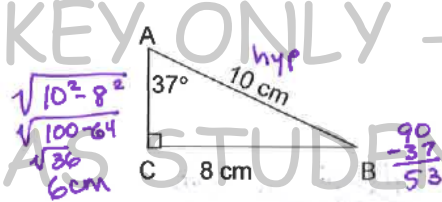


HW3W 1 Label Sides of a Triangle

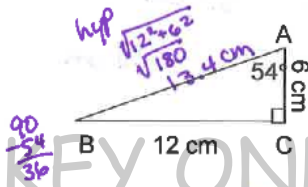
Name: Jones
 Find all missing sides and angles of the triangle given. Write numerical answers in each blank. Angle C is always the right angle. Round to the nearest tenth if needed.

1.



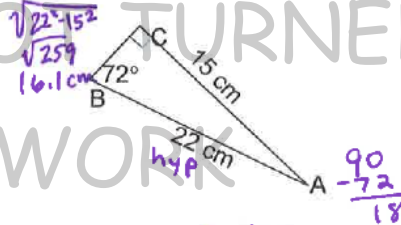
- $\angle C = 90^\circ$
- $\angle B = 53^\circ$
- Side Opposite $\angle A = 8 \text{ cm}$
- Side Adjacent to $\angle A = 6 \text{ cm}$
- Side Opposite $\angle B = 6 \text{ cm}$
- Side Adjacent to $\angle B = 8 \text{ cm}$
- Hypotenuse = 10 cm

2.



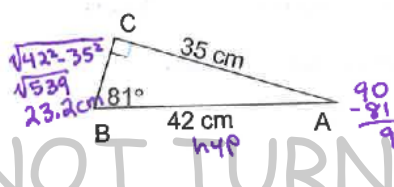
- $\angle C = 90^\circ$
- $\angle B = 36^\circ$
- Side Adjacent to $\angle B = 12 \text{ cm}$
- Side Opposite $\angle B = 6 \text{ cm}$
- Side Adjacent to $\angle A = 6 \text{ cm}$
- Side Opposite $\angle A = 12 \text{ cm}$
- Hypotenuse = 13.4 cm

3.



- $\angle C = 90^\circ$
- $\angle B = 72^\circ$
- Side Opposite $\angle A = 16.1 \text{ cm}$
- Hypotenuse = 22 cm
- Side Opposite $\angle B = 15 \text{ cm}$
- Side Adjacent to $\angle B = 16.1 \text{ cm}$
- Side Adjacent to $\angle A = 15 \text{ cm}$

4.



- $\angle C = 90^\circ$
- $\angle B = 81^\circ$
- Side Opposite $\angle A = 23.2 \text{ cm}$
- Side Opposite $\angle B = 35 \text{ cm}$
- Side Adjacent to $\angle A = 35 \text{ cm}$
- Side Adjacent to $\angle B = 23.2 \text{ cm}$
- Hypotenuse = 42 cm

Key HW 3W, 4W worksheets Geo C8

KEY ONLY - NOT TURNED IN AS STUDENT WORK

KEY ONLY - NOT TURNED IN AS STUDENT WORK

KEY ONLY - NOT TURNED IN AS STUDENT WORK

KEY ONLY - NOT TURNED IN AS STUDENT WORK

